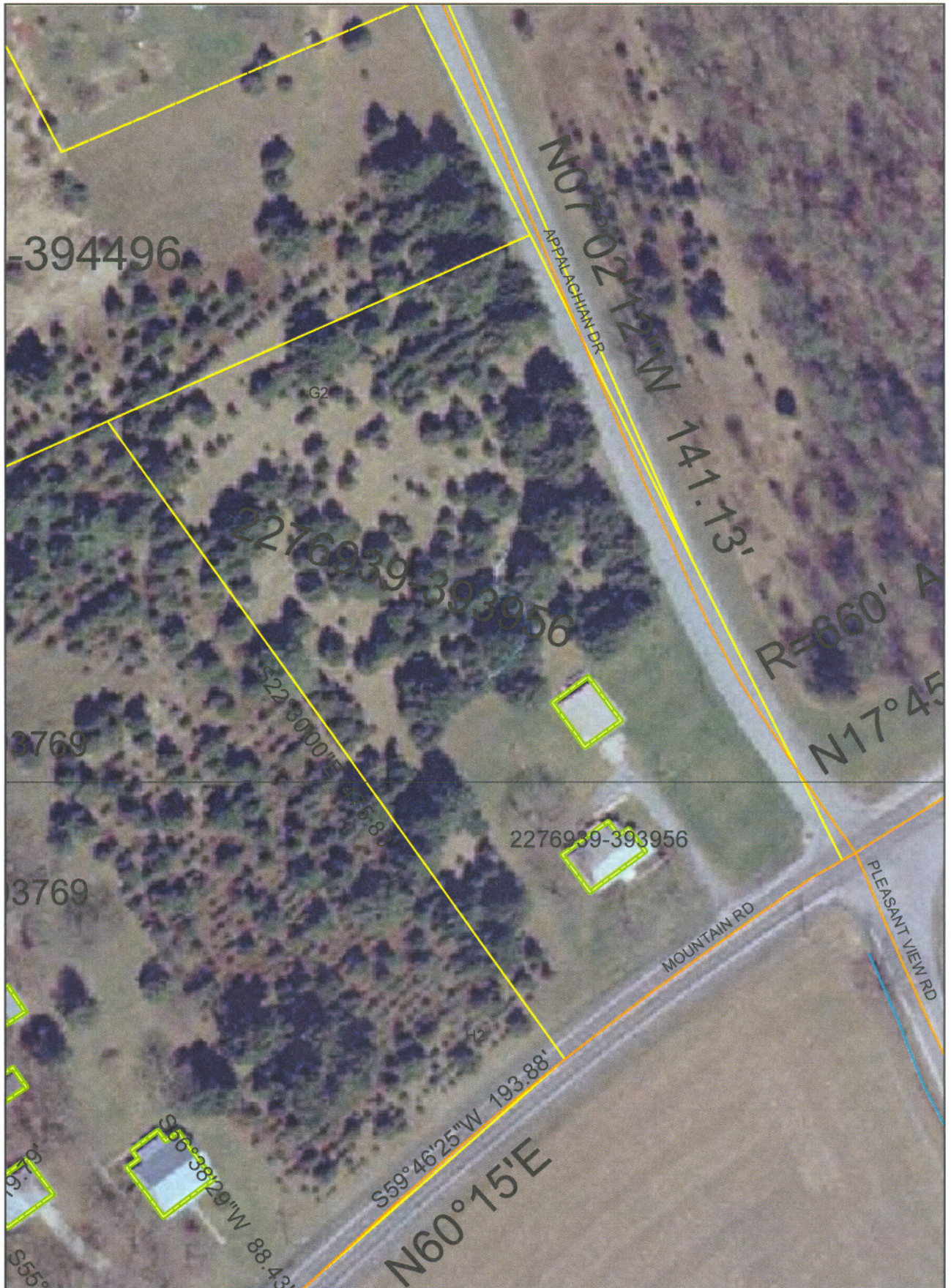


# Lebanon County Tax Assessment Office



1 inch equals 83.33 feet



Tax Maps Compiled from 1997 Aerial Photography  
Map Projection - PA State Plane Coordinate System  
South Zone, NAD83, Coordinates in Feet

#### Disclaimer:

Tax maps show the approximate boundaries of taxable and non-taxable property. The property boundaries depicted should not be interpreted as the legal boundary description. The legal boundary description can be obtained from the property's deed.