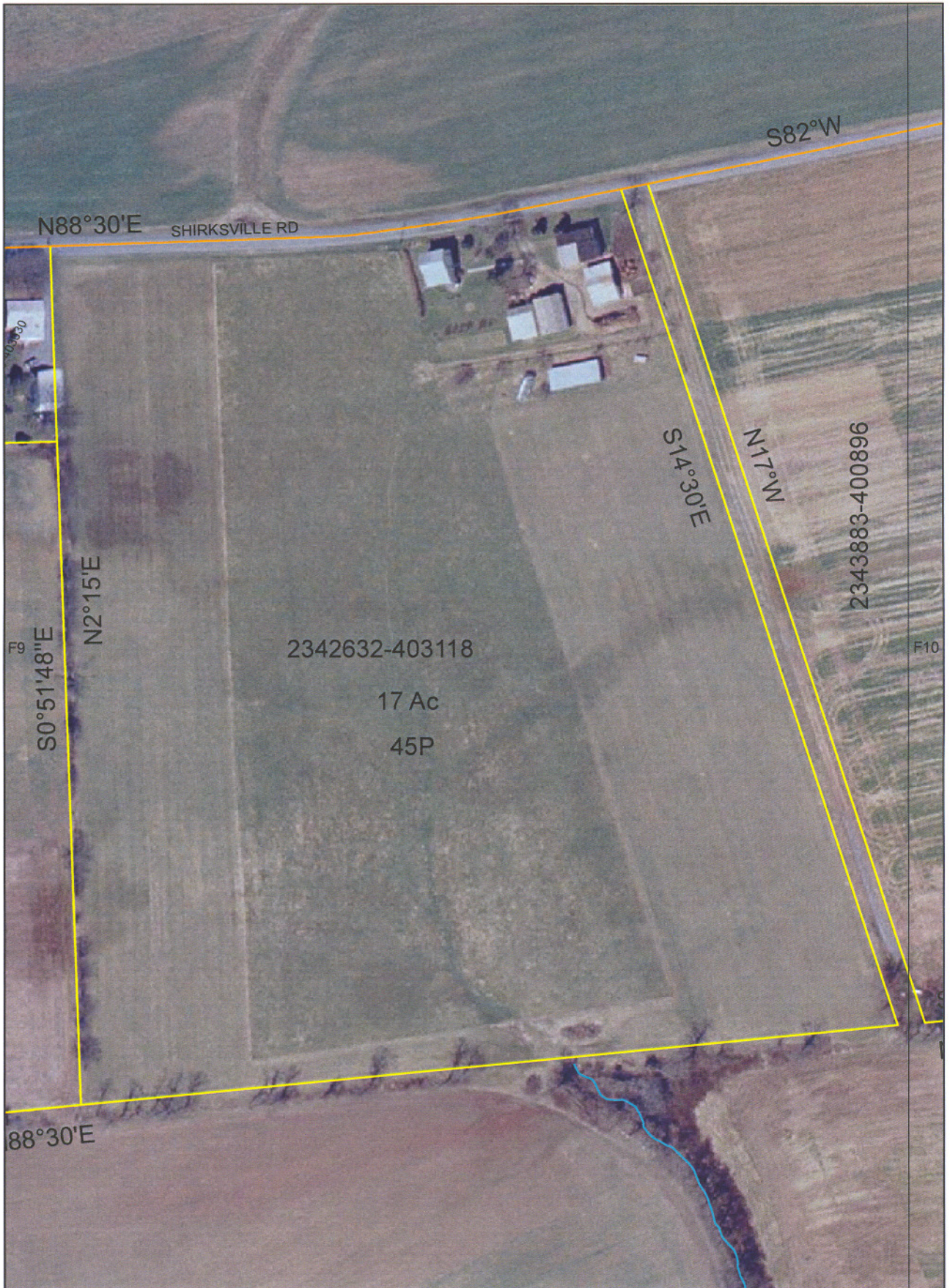


Lebanon County Tax Assessment Office



1 inch equals 158.33 feet

Disclaimer:

Tax maps show the approximate boundaries of taxable and non-taxable property. The property boundaries depicted should not be interpreted as the legal boundary description. The legal boundary description can be obtained from the property's deed.





SHIRKSVILLE ROAD

524.7

125.4

CHAS
MILLER

17 ACRES
45 PERCHES

981.75

999.90

920.7

